



POWERING AFFORDABLE CARE

with clinical drug monitoring

Using drug testing to monitor medication adherence can help to identify prescribed and nonprescribed substances, patient compliance with critical medications, harmful drug interactions, and potential substance use disorder



Streamlining behavioral healthcare decisions through comprehensive and efficient drug monitoring, Quest Diagnostics has you and your patients covered

Caring for patients in a behavioral health setting requires more than clinical expertise and compassion. It requires efficient, economical tools for responsible and cost-effective laboratory testing, and diagnostic insight for personalized treatment plans. By providing the right tests and the right technology at the right costs, Quest Diagnostics helps you optimize your behavioral health practice while allowing you to make more informed patient care decisions and help keep your patients safe.

Healthcare providers have trusted Quest Diagnostics with their patients' diagnostic needs for decades. Our reputation in clinical laboratory diagnostics is built on our comprehensive and reliable test menu coupled with our unparalleled commitment to service. From the start, we collaborate with you to offer practical and responsible test selection—a valuable foundation that provides the right tests at the right time, helping to minimize over-testing while providing the right level of information needed to make informed decisions.

When it comes to drug monitoring, Quest Diagnostics is here for you



Drug monitoring menu, options, and services

Discuss what tests to use, specimen requirements, and whether or not to select medMATCH®.



Drug monitoring results inquiries and interpretation

Discuss results interpretation, develop the right testing plans for your patients and practice.



Drug monitoring consultation

Schedule a call with our toxicology experts on more complex questions.

Our experts are available by phone Monday-Friday, 8:00 AM–10:00 PM EST

1.877.40.RXTOX (1.877.407.9869)

Quest agrees with CDC and multiple other guidelines that drug monitoring is the Standard of Care when controlled substances are prescribed. This can help ensure compliance, and identify harmful drug interactions, misuse, abuse, and diversion.

With a broad selection of tests, fast turnaround time, and accessible results **available at the right cost**, we can help you efficiently make informed care decisions.



A trusted lab committed to responsible testing

- More than 50 years of expertise in diagnostic testing
- State-of-the-art testing with enhanced sensitivity
- Over 600 medical and scientific experts on staff—including clinical leaders in toxicology, pain medicine, and mental health disorders—who are available for consultation and to help with results interpretation

One lab for all your testing needs

- A comprehensive, state-of-the-art drug testing menu to cover prescribed, non-prescribed, and illicit drugs
- A broad selection of drug tests and panels appropriate for multiple patient audiences, including pain medications, stimulants, sedatives, antidepressants, antipsychotics, other controlled substances, as well as illicit drugs
- In addition, we offer testing for infectious diseases, women's and reproductive health, cancer, neurological diseases, cardiovascular disease, metabolic disorders, and general health
- Oral fluid specimen collection available as an alternative to urine for drug testing

A lab that is easy to work with

- Manage all of your laboratory needs with a single login with our Quantum® Lab Services Manager
- Simplify your lab test ordering, tracking, supply, and courier scheduling with just a few clicks
- Seamlessly interface with more than 600 EHRs, allowing clinicians to order and obtain all laboratory results directly
- Support clinician/patient interactions with easy-to-read results

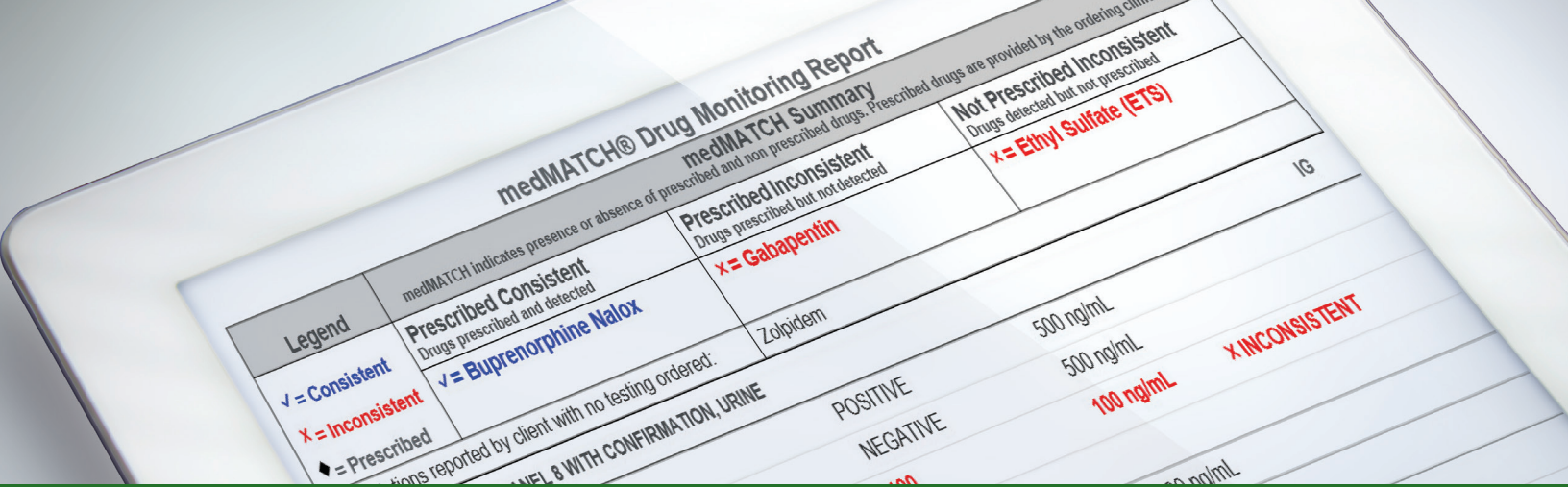


We believe good care must be balanced by cost. That's why we provide responsible drug testing.

Because Quest is in-network for >92% of lives nationwide and has preferred lab network status with numerous major health plans, testing is more accessible for your patients.

For uninsured or qualified patients, we offer special programs that can include patient assistance, discounts, and payment plans. Because every patient is different, each case is handled personally—we work with patients to develop a payment plan that meets their needs.

Learn more at [QuestDiagnostics.com/PatientAssistanceProgram](https://www.questdiagnostics.com/PatientAssistanceProgram)



Quest Diagnostics offers a comprehensive, state-of-the-art test menu for you and your patients

We know that you and your patients need more flexibility than a one-size-fits-all approach. That's why we put the power of matching the right test for the right patient into your hands with several testing options that meet your needs across multiple situations:

- Presumptive testing
- Presumptive with reflex to definitive testing
- Definitive testing
- Our medMATCH reporting option is available for the majority of our test offerings and provides results that correspond to your list of provided prescriptions
- We provide testing options to meet your sample requirement needs—including urine and oral fluid
- We have a network of more than 2,250 Patient Service Centers (PSCs) to make testing more accessible for patients; in addition, we recently introduced an “at home” specimen collection offering, for when in-office collection is not an option

Our comprehensive test menu covers a broad range of substances

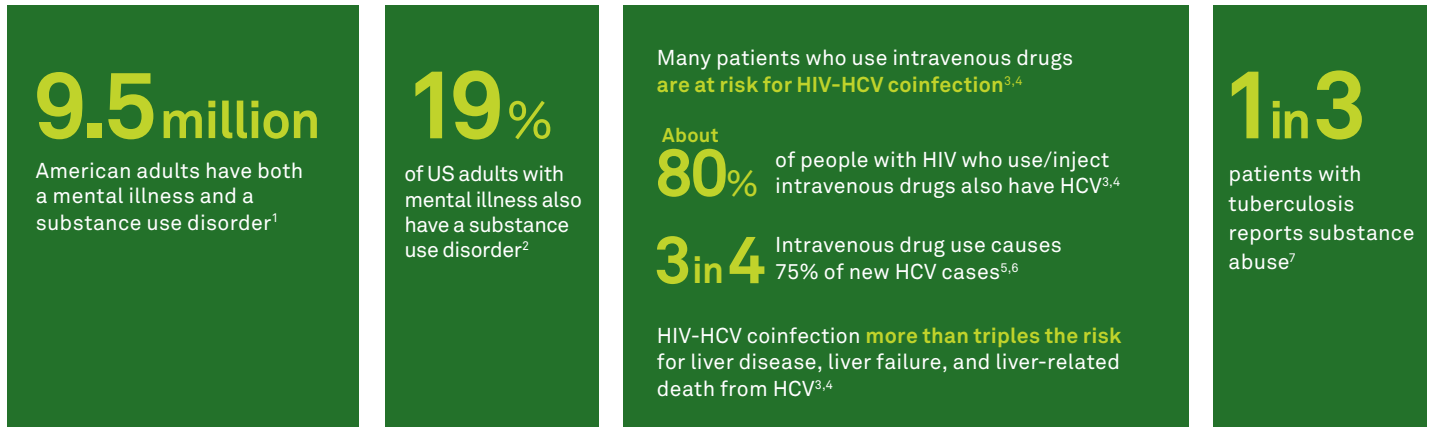
- | | | |
|-----------------------------|-----------------------------|---------------------------|
| Alcohol metabolites | Fentanyl | Opiates |
| Amphetamines | Gabapentin | Oxycodone |
| Amphetamines d/l Isomers | Heroin metabolite | Phencyclidine |
| Antidepressants | Marijuana metabolite | Pregabalin |
| Antipsychotics | MDMA/MDA | Propoxyphene |
| Barbiturates | Meperidine | Synthetic cannabinoids |
| Benzodiazepines | Methadone metabolite | Synthetic stimulants |
| Buprenorphine with Naloxone | Methamphetamine d/l isomers | Tapentadol |
| Carisoprodol | Methylphenidate | Tramadol |
| Cocaine metabolite | Mitragynine | Tricyclic antidepressants |
| Eszopiclone | Naltrexone | Zolpidem |

For the complete Test Directory, visit [QuestDrugMonitoring.com/test-directory](https://www.questdiagnostics.com/test-directory)



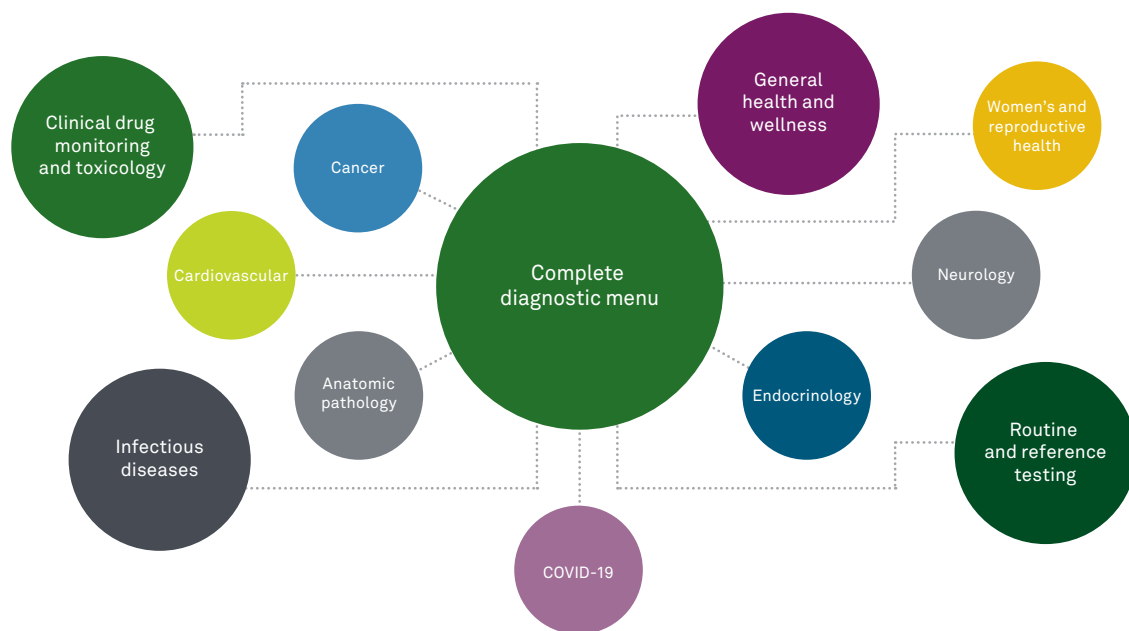
Supporting your patients with diverse testing for diverse needs

We recognize how complex patient care can be, and the need to ensure the overall health of your patients, particularly when you are faced with multiple conditions due to common comorbidities.



Diverse clinical needs require diverse testing. In addition to our clinical drug monitoring services, we offer a full menu from routine testing to specialized testing across all categories to meet the diagnostic needs of your practice and your patients.

Lab testing for the behavioral health practice—from routine to specialty



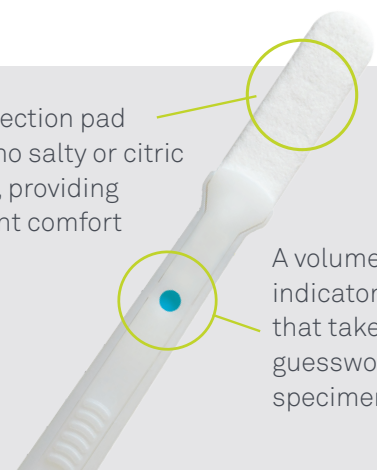
Oral-Eze®: When you need an alternative

Quest Diagnostics knows that your needs change, and that having more choices benefits both you and your patients when monitoring for the presence of drugs. For those situations when urine collection is not practical, we offer an alternative—oral fluid.

Oral-Eze oral fluid collection takes approximately 5 minutes, **reducing time in the office and improving patient convenience.**

A collection pad with no salty or citric taste, providing patient comfort

A volume adequacy indicator window that takes the guesswork out of specimen collection



Take advantage of our medMATCH reports

Our medMATCH reports are designed to provide actionable insights with the goal of “at-a-glance” interpretation. The reports provide a summary of your patient’s consistent and inconsistent results for prescribed drugs, and also includes reporting on nonprescribed, inconsistent drugs. This allows you to have a better view of drugs that your patient is taking, address any non compliance issues, and be alerted to any potential drug misuse or dangerous drug combinations.

medMATCH reports offer providers an intuitive, streamlined process from ordering to the delivery of the final report.

medMATCH® Drug Monitoring Report			
Legend	medMATCH Summary medMATCH indicates presence or absence of prescribed and non prescribed drugs. Prescribed drugs are provided by the ordering clinician.		
✓ = Consistent	Prescribed Consistent Drugs prescribed and detected	Prescribed Inconsistent Drugs prescribed but not detected	Not Prescribed Inconsistent Drugs detected but not prescribed
✗ = Inconsistent	✓ = Buprenorphine Nalox	✗ = Gabapentin	✗ = Ethyl Sulfate (ETS)
◆ = Prescribed			
Prescriptions reported by client with no testing ordered:		Zolpidem	
DRUG MONITORING, PANEL 8 WITH CONFIRMATION, URINE			
Alcohol Metabolites	POSITIVE	500 ng/mL	
Ethyl Glucuronide (ETG)	NEGATIVE	500 ng/mL	
Ethyl Sulfate (ETS)	100	100 ng/mL	✗ INCONSISTENT
Alcohol Metab Comments: See Alcohol Metab Notes, LDT Notes			
Amphetamines	NEGATIVE	500 ng/mL	
Benzodiazepines	NEGATIVE	100 ng/mL	
Buprenorphine	POSITIVE	5 ng/mL	
◆ Buprenorphine	101	2 ng/mL	✓ CONSISTENT
◆ Norbuprenorphine	105	2 ng/mL	✓ CONSISTENT
◆ Naloxone	110	2 ng/mL	✓ CONSISTENT
Buprenorphine Comments: See Buprenorphine Notes, LDT Notes			

medMATCH Summary expanded to 3 categories

Alerts clinician to nontested prescription drugs

Inconsistent results are flagged

Drug-class-specific notes and lab-developed test (LDT) notes are consolidated and listed at the end of report

Consistent results for prescribed drugs are flagged



At Quest Diagnostics, our goal is to serve you in a way that supports the needs of your practice. That's why we regularly deliver insights that can help you and your patients make the most informed clinical decisions.

Our most recent **Quest Diagnostics Health Trends™** study, *The Opioid Epidemic Within the COVID-19 Pandemic: Drug Testing in 2020*, was conducted to better understand the relationship between the COVID-19 pandemic and the drug misuse epidemic in the US.

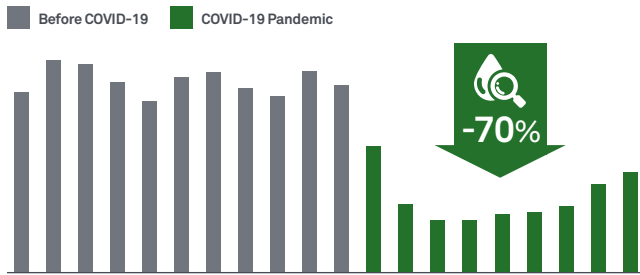
Quest Diagnostics study investigators analyzed changes in drug positivity rates and drug testing volumes, utilizing deidentified urine drug testing (UDT) results from January 1, 2019 to May 16, 2020. Study results showed that prescription drug monitoring declined during the weeks of the COVID-19 pandemic studied, while positivity for nonprescribed illicit drugs and dangerous drug combinations increased.



Quest study findings indicate that during COVID-19 pandemic, clinical drug testing decreased, while nonprescribed positivity for fentanyl and many fentanyl drug combinations increased significantly. Extra vigilance is needed to combat our nation's drug abuse crisis, now more than ever.

Clinical drug monitoring declined rapidly during the COVID-19 period

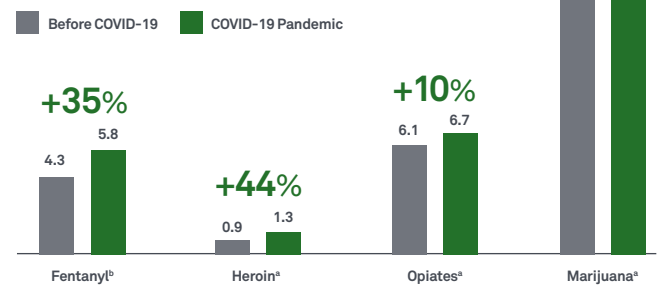
Weekly drug testing volume -70% from baseline to trough in early-April



Weekly volume of medMATCH tests with prescription drug(s), 2019-May 2020

Positivity for nonprescribed substances

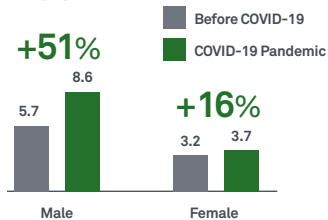
Significant increases in positivity also demonstrated for heroin (44%), opiates (10%), and marijuana (4%)^a



^a P<.01 for all listed substances ^b Significance analyzed with Chi-square test

Increases not confined to any single patient category (Ages 25+)

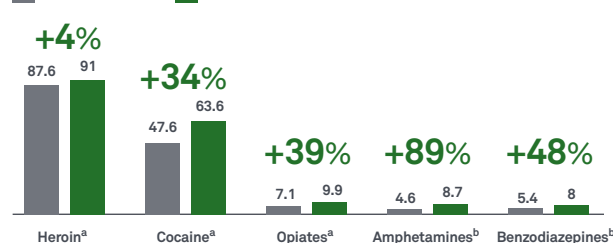
Nonprescribed fentanyl positivity, by age group and sex^c



^c Chi-square test indicated significant differences in proportions between time periods for all groups (P = .02 or less) except the group aged 18-24 years

The combination of nonprescribed fentanyl in patients positive for other drugs, also increased during the pandemic

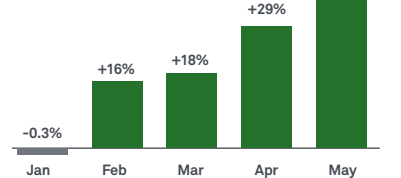
Before COVID-19 COVID-19 Pandemic



^a P<.01 for all listed substances ^b Significance analyzed with Chi-square test

Monthly overdoses have grown dramatically during the pandemic^{d,8}

Overdoses⁸ increased significantly during the pandemic as compared to the same months in 2019⁸



^d Percent increase references the 1,201 agencies reporting to ODMAP by January 2019. Source: ODMAP ^e Suspected overdoses nationally—not all fatal

Looking for more data? Ask your representative for the full Quest Diagnostics HealthTrends report or visit [QuestDrugMonitoring.com/DrugTesting2020](https://www.questdiagnostics.com/DrugTesting2020)

Quest Diagnostics Clinical Drug Monitoring

Rely on a trusted drug testing laboratory

Quest Diagnostics helps you protect your practice and patients with state-of-the-art testing, including an extensive menu for prescription pain medications, other controlled substances, and illicit drugs. With fast turnaround, accurate results, an industry-leading testing portfolio, and an array of on-staff toxicologists and medical experts, Quest is committed to working with you to provide the services, results, and insights you need at each stage of your patient's care.

Our state-of-the-art drug testing offering



Comprehensive menu—Prescription drugs used in treatment of chronic pain, ADHD, anxiety, depression, substance use disorder, other controlled medications, and substances of abuse



Performance—High-sensitivity, low cut-off levels designed to detect drugs at typical dosage levels. Fast turnaround time and results confirmation



Reporting—Optional medMATCH results interpretation: "Inconsistent" when results do not match prescriptions provided by clinician. Quarterly practice level data and analytics



Connectivity and service—Exceptional service and efficiency that aligns with your workflow. Connectivity with over 650 EMR systems



Expert support—Toxicology experts to answer questions on test selection and results interpretation at 1.877.40.RXTOX (1.877.407.9869)



No surprise bills—We're in-network for >90% of lives nationwide and have preferred lab network status with major health plans—a connection that enables us to deliver real-time pricing for patients at the time of service

Stay current in drug monitoring with new insights, blog posts, and updated resources available at [QuestDrugMonitoring.com](https://www.questdiagnostics.com/questdrugmonitoring)



Contact your Quest Diagnostics sales representative:
call 1.866.MYQUEST (1.866.697.8378) or visit [QuestDiagnostics.com](https://www.questdiagnostics.com).

References

1. Han, B. *Key Substance Use and Mental Health Indicators in the United States: Results from the 2019 National Survey on Drug Use and Health*. Substance Abuse and Mental Health Services Administration, US Dept of Health and Human Services; 2020. <https://www.samhsa.gov/data/sites/default/files/reports/rpt29393/2019NSDUHFFRDPDFWHTML/2019NSDUHFFR090120.htm>
2. National Alliance on Mental Illness. Infographic: the ripple effect of mental illness. Updated March 2021. Accessed August 2, 2021. <https://www.nami.org/NAMI/media/NAMI-Media/Infographics/NAMI-Impact-Ripple-Effect-FINAL.pdf>
3. CDC Center for HIV/AIDS, Viral Hepatitis, STD, and TB Prevention. HIV and viral hepatitis fact sheet. March 2014. <https://www.hivlawandpolicy.org/sites/default/files/HIV%20and%20Viral%20Hepatitis%20Fact%20Sheet%20%28CDC%29.pdf>
4. Des Jarlais DC, Arasteh K, Perlis T, et al. Convergence of HIV seroprevalence among injecting and non-injecting drug users in New York City. *AIDS*. 2007;21(2):231-235. doi:10.1097/QAD.0b013e3280114a15
5. Hellard M, Sacks-Davis R, Gold J. Hepatitis C treatment for injection drug users: a review of the available evidence. *Clin Infect Dis*. 2009;49(4):561-573. doi:10.1086/600304
6. Suryaprasad AG, White JZ, Xu F, et al. Emerging epidemic of hepatitis C virus infections among young nonurban persons who inject drugs in the United States, 2006-2012. *Clin Infect Dis*. 2014;59(10):1411-1419. doi:10.1093/cid/ciu643
7. CDC. Targeted tuberculin testing and treatment of latent tuberculosis infection. *MMWR Recomm Rep*. 2000;49(RR-6):1-51.
8. Overdose Detection Mapping Application Program (ODMAP). Accessed July 23, 2020. <http://www.odmap.org/>

Image content features models and is intended for illustrative purposes only.

[QuestDiagnostics.com](https://www.questdiagnostics.com)

Quest, Quest Diagnostics, any associated logos, and all associated Quest Diagnostics registered or unregistered trademarks are the property of Quest Diagnostics. All third-party marks—® and ™—are the property of their respective owners.
© 2022 Quest Diagnostics Incorporated. All rights reserved. SB7911 2/2022

